

This help pack is designed to supplement your CFA VESEP material with easy to follow assistance. VFBV provides this service to help you with your application.



VFBV | VOLUNTEER FIRE BRIGADES VICTORIA

Application Help Pack
2018

VOLUNTEER FIRE BRIGADES VICTORIA
*assisting CFA Brigades and Groups
with a timely application for
VESEP funding*



VOLUNTEER EMERGENCY SERVICES EQUIPMENT PROGRAM 2018/19





VOLUNTEER FIRE BRIGADES VICTORIA
assisting CFA Brigades and Groups
with a timely application for
VESEP funding

VOLUNTEER EMERGENCY SERVICES EQUIPMENT PROGRAM

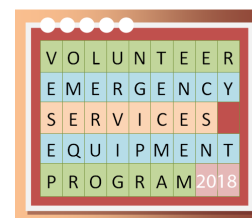


TABLE OF CONTENTS

APPLICATION HELP PACK 2018 - 2019

Prepared by Volunteer Fire Brigades Victoria (VFBV)

to assist CFA Brigades and Groups
with a timely application for VESEP funding

1	Table of Contents	p 2
2	Introduction	p 3
3	Application Details <i>incl</i> Tanker costs	p 4-5
4	Application Ideas	p 6
5	VESEP Tick Sheet - Countdown Calendar	p 7
6	Sample Business Plan / Financial Plan	p 8
7	VFBV assistance with VESEP Hardship Guidelines	p 9
8	VFBV help with CFA VESEP information web pages found on CFA Online	p 10
9	Supporting Documents sample	p 11
13	VESEP Case Studies	p 12
14	VESEP contact details & CFA VESEP contact details	p 12
15	Addendum 1 – CFA Information Sheets (Specifications)	p 13
16	Addendum 2 – Special Access Grant	p 39
17	Addendum 3 – CFA 2018/19 Program Guidelines	p 42



VOLUNTEER FIRE BRIGADES VICTORIA

assisting CFA Brigades and Groups

with a timely application for

VESEP funding

VOLUNTEER EMERGENCY SERVICES EQUIPMENT PROGRAM



INTRODUCTION

Volunteer Fire Brigades Victoria

“VFBV appreciates the Government’s recognition of the professionalism and essential services provided by Victoria’s emergency management volunteers. The VESEP program is a great government investment in maintaining and building volunteer capability, from Victoria’s most remote communities to its largest cities, with CFA volunteer Brigades protecting 60% of Melbourne’s suburbs, regional cities and all of country Victoria” affirmed VFBV CEO, Andrew Ford.

“VESEP provides grants for operational items that the applicants believe will best benefit their local community. That makes it a real winner with local volunteer Brigades, who can apply for replacement or additional operational vehicles, specialist equipment and improvements to amenities – all practical stuff that volunteers can use to make their communities safer.”

The program launched in the year 2000, which back then was called the CSESP Program (Community Safety Emergency Support Program).

The program was designed in close consultation with VFBV and volunteers and achieved the goal of having an annual grants program for volunteers - designed by volunteers, with a low paperwork requirement, \$2 in grant money for every \$1 of local contribution for sustainability and local buy-in, local driven priorities with annual strategic state initiatives, robust district/region and state volunteer peer review and a quick and timely approval and notification process to the successful brigades and groups.

Since its inception, the program has completed over 1,500 projects totalling more than \$110 million dollars.

VFBV encourages all CFA Brigades, Groups, District Councils and Championship Committees to make use of this **VFBV Application Help Pack** to assist them in their applications.

This pack offers practical suggestions and complements CFA’s Guidelines and the 2018/19 Application forms. If Brigades would like a supplementary copy, please call the VFBV Office on 9886 1141

Members can also contact their local VFBV State Councillors and/or VFBV Support Officers for any additional information or assistance with their applications.

We wish you well with your application!



APPLICATION DETAILS 2018 / 19

Conditions of VESEP 2018/19 grants

- You may apply for only **ONE** project in the 2018/19 round
- The Chief Officer will be responsible for management of program
- All funding applications to be endorsed & prioritised by respective DPC and be consistent with District/Region Infrastructure Plans
- Any additions to the brigade owned fleet require approval of local Operations Manager, ACO and CO
- CFA will maintain approved tankers and specialist appliances to level 1 maintenance
- Projects commenced on or before Ministerial approval will not be eligible for VESEP funding.
- It's the responsibility of Brigade/Group to replace assets acquired

What is NOT funded?

- Core CFA budget requirements
- Ongoing expenditure such as maintenance
- Projects currently in progress
- Project overspend

Where do I find information regarding what is funded in the 2018/19 VESEP grants?

Refer to CFA website - **Brigades Online > Brigade >/ Property & Equipment > Brigade Owned Vehicles > Current VESEP Details** and click to download:

- VESEP CFA Program Guidelines for 2018/19 funding round. See page 3 for priority given to categories
- VESEP CFA Application Form **Part A: Vehicles and Operational Equipment Application**
- VESEP CFA Application Form **Part B: Volunteer Amenities and Minor Works Application**
- VESEP Approved Vehicle Specification and Costs

Alternatively, documents can be found on VFBV website by following VESEP article on web home page.

ENDORSED PROJECTS: must be operationally justified

5.1 TANKERS

VESEP Light Tanker Crew Cab

\$2 VESEP to \$1 Brigade -cab chassis
 Body- Funded by grant contribution

Brigade contribution \$ 27,200
 Grant contribution \$ 182,800
 Total project cost \$ 210,000

**VESEP Ultra Light Tanker
 Toyota Land Cruiser**

\$2 VESEP to \$1 Brigade - cab chassis
 Body- Funded by grant contribution

Brigade contribution \$ 21,500
 Grant contribution \$ 118,500
 Total project cost \$ 140,000

If a Brigade is purchasing an additional vehicle to the fleet the application will need the endorsement of your local Operations Manager & Assistant Chief Officer. The Chief Officer will have final approval over all additions to the fleet.

VESEP Rehabilitation Unit

\$2 VESEP to \$1 Brigade

Brigade contribution \$ 46,666
 Grant contribution \$ 93,334
 Total project cost \$ 140,000

VESEP Medium Tanker replacement tanker:

\$2 VESEP to \$1 Brigade - cab chassis
 Body: Funded by grant contribution

Brigade contribution \$ 50,000
 Grant contribution \$ 320,000
 Total project cost \$ 370,000

VESEP Addition to Fleet

\$2 VESEP to \$1 Brigade -total cost of vehicle

Brigade contribution \$ 123,333
 Grant contribution \$ 246,667
 Total project cost \$ 370,000



5.2 SPECIALIST APPLIANCES

\$2 VESEP to \$1 Brigade
-to maximum VESEP
contribution of \$150,000

5.3 OPERATIONAL EQUIPMENT (inc FCVs)

\$2 VESEP to \$1 Brigade
-to maximum \$150,000 VESEP

N.B. FCV Vehicles under five (5) years of age will not be considered for replacement under the program

VESEP Multipurpose Vehicles

The appliance is a multi-purpose vehicle licensed to carry five (5) crew, including the driver. The rear of the appliance can be configured to suit Brigade's specific requirements. Appliance to be stowed with equipment to secure and clean up after an incident.

Equipment examples may include:

- Remote Area Lighting | Staging Area Equipment | Thermal Imaging Equipment | Hose testing Trailer | Positive Pressure Fans | Training Equipment | Hose Branches

All applications will be considered on their respective merits.

Field Command Vehicles

\$2 VESEP to \$1 Brigade funding
\$150,000 max. VESEP contribution
excluding GST

Applications must be supported by GVM weight calculation pro forma if not CFA standard build.

GVM upgrades not considered.

Items NOT available include:

Helmet Torches | Radios | Breathing Apparatus | Major Capital Works >\$100K | PFIT Kits | Turn Out Systems | GVM upgrades on FCVs

5.4 VOLUNTEER AMENITIES IMPROVEMENTS

\$5,000 max.
\$2 VESEP to \$1 Brigade
Brigade contribution \$1,667
Grant contribution \$3,333
Total project cost \$5,000

Needs to be non- structural, not requiring a permit

- Kitchen refurbishments/Fridge | Air conditioning | Hot water services | Carpet | Furniture | Table/Chairs

5.5 BRIGADE MINOR WORKS

which will enhance CFA member amenities and safety.

Total project value to be less than \$100,000

\$2 VESEP to \$1 Brigade
Brigade contribution \$ 33,333
Grant contribution \$ 66,667
Total project cost \$100,000

Examples may include

- Motorization of motor room doors | Installation of garage / shed Station refurbishment Static generators Extension to station Car park sealing | PPC Storage

No projects greater than \$100K

A position VESEP Minor Works Project Manager – Land & Buildings has been established to advise brigades considering minor works projects and to coordinate all Planning and Building Permit approval. Register with Bruce Rowley 5833 2425 b.rowley@cfa.vic.gov.au

Discuss grant application with your Catchment Officer & Asset Project Officer

Tanker Costs – VESEP 2018/19



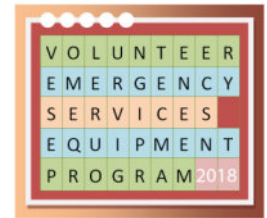
Pricing - Indicative @ April 2018

Funding Source	ULT Landcruiser	Light Tanker Crew Cab	Medium Tanker Addition to Fleet	Medium Tanker Replacement Tanker
Brigade	\$21,500	\$27,200	\$123,333	\$50,000
Grant Contribution	\$118,500	\$182,800	\$246,667	\$320,000
Total	\$140,000	\$210,000	\$370,000	\$370,000

Cost escalation to point of build in 2018/19 allow up to 10% increase.
Options available on some appliances at Brigade cost



VOLUNTEER FIRE BRIGADES VICTORIA
assisting CFA Brigades and Groups
with a timely application for
VESEP funding



VOLUNTEER EMERGENCY SERVICES EQUIPMENT PROGRAM

APPLICATION IDEAS FROM PREVIOUS SUCCESSFUL GRANTS

If you need inspiration the list below may assist you determining what would most help your Brigade/ Group/ District Council or Championship Committee.

PROJECT IDEAS			
Trailer & Generator	Water Tank & Pump	Install Hot Water unit	Cooktop & Electric Oven
Pressure Washer	Cabinets	Roller Shutter Door	Rehabilitation Unit
Notebook & Tripod	Concrete Apron	Data Projector	Hot Boxes
Chairs & Trestle Tables	Extension	Alarm System	Pergola
Meeting Room Fitout	Dishwasher & fridge	Brushcutter	Supply & Fit Storage Cabinet
Generator	Install Kitchenette	Oven & installation	Upgrade Training Room
Laptop, Software & Printer			Extension to Motor Room
Hot Water Service & Installation			Split System Air Conditioner
Electrical Connection to Storage Shed			Dishwasher, TV/DVD and Noticeboard
Cooker & Water Filter			Automated External Defibrillator
Upgrade Comms Room & Office			Draughting Pump Pit
Air Conditioner & Insulation Batts			Upgrade kitchen, toilets & Mtg Rm
Asphalting Carpark			Construct Turnout Area
Remote Area Lighting			Meeting Room Furniture
Floor Coverings			Motorised Security Gate
Lighting Equipment			Automation of roller door
Water Tank & Fittings			Workshop Storage
Replacement of Lino			Landscaping
Installation of Shower, Screen Doors			Hose Drying Rack & Lighting
Engel Car Fridge			Racks for Turnout Gear
Kitchen Upgrade			Canvas Hose
Cupboards, Drawers, Benchtop & chairs			Station Extension
Air Conditioner			Quad fog nozzles
Rescue Tools			Cooker & Water Filter
Lawnmower & Brushcutter			Telstra Mobile Smart Antenna
1.2.4D Crew Cab Light Tanker			Thermal Imaging Camera
2.4C Medium Tanker -			Mussel/Vortex control
Ultra Light Tanker			Quick Fill Pump
Quick Fill Trailer Upgrade	Protek Nozzle Branches	Telstra cell fire telephone repeater	
Meeting Room Chairs	Big Fill	Hydraulic RAM	
Mussel Foot valve & Chaps	Mobile Hose Testing Trailer	Lightbar & Siren	
Collar Tank with Trailer & Pump	Field Command Vehicle - Toyota Landcruiser	Field Command Vehicle - Ford Ranger	

With VESEP grants, the key to success is preparing early - your application and your support.

You have 5 weeks from grant announcement to due date 04 / 06 / 2018



VESEP Endorsed Projects

This year's 5 categories:

- Tankers
- Specialist Appliances
- Operational Equipment / FCV
- Volunteer Amenities <\$5K
- Minor Works <\$100K

What does your Brigade or Group need?



VOLUNTEER FIRE BRIGADES VICTORIA
assisting CFA Brigades and Groups
 with a timely application for
VESEP funding

VOLUNTEER EMERGENCY SERVICES EQUIPMENT PROGRAM



COUNTDOWN CALENDAR - TICK YOUR WAY TO SUCCESS!

PREPARE PREPARE PREPARE FOR YOUR VESEP APPLICATION		
April 27 th	<input checked="" type="checkbox"/>	<ul style="list-style-type: none"> Government announces 2018/19 VESEP program with the details of this current year's priorities and categories in which funding will be made available.
Are you well under way?	<input type="checkbox"/> <input type="checkbox"/> <input type="checkbox"/>	<ul style="list-style-type: none"> Brigade/ Group updates/prepares your financial plan / considers a Special Access Grant <ul style="list-style-type: none"> current bank account/s balance/s 5 year plan for brigade expenditure - what are those funds planned outcome? 5 year plan for boosting brigade funds, inc. asking financial support from Group
	<input type="checkbox"/> <input type="checkbox"/> <input type="checkbox"/> <input type="checkbox"/>	<ul style="list-style-type: none"> Brigade/ Group discusses possible category it wishes to apply for Brigade/ Group decides on the item it deems will significantly improve your operational readiness or member facilities. Brigade/ Group obtains preliminary quotes Obtains required endorsement from OM & ACO if wanting additions to fleet
COMMUNICATE COMMUNICATE COMMUNICATE YOUR PLANS		
May – June	<input type="checkbox"/> <input type="checkbox"/> <input type="checkbox"/> <input type="checkbox"/> <input type="checkbox"/>	<ul style="list-style-type: none"> Brigade/ Group continues discussion of plans with your Group & Catchment Officers Contacts the VESEP Minor Works Project Manager if applying for this category Seeks expert advice from the CFA Regional Asset Maintenance Manager Continues the discussion of the idea with your neighbouring Brigades Ensures that Brigade/ Group application supports the Group Resource plan
	<input type="checkbox"/> <input type="checkbox"/>	<ul style="list-style-type: none"> Brigade/ Group discusses plans with Catchment Officers/ Operations Officers Brigade/ Group seeks endorsement by Catchment Officer/ Operations Officer that your application supports the District Resource Plan
	<input type="checkbox"/>	<ul style="list-style-type: none"> Brigade/ Group discuss plans with CFA Project Co-ordinator, Diane Frost, to ensure you're on the right track and to raise your profile ensuring that Dianne is aware of your application. Diane Frost, <i>VESEP Project Coordinator</i> Ph: 9262 8630 Email: d.frost@cfa.vic.gov.au
	<input type="checkbox"/> <input type="checkbox"/> <input type="checkbox"/> <input type="checkbox"/> <input type="checkbox"/>	<ul style="list-style-type: none"> Brigade/ Group prepares supporting documents describing <ul style="list-style-type: none"> purpose & how it will assist with your operational readiness how it will assist your Brigade/ Group amenities in support of your infrastructure needs how it will assist your neighbouring Brigades and stating their level of support how it will assist your local and wider community
	<input type="checkbox"/> <input type="checkbox"/>	<ul style="list-style-type: none"> Brigade/ Group completes draft copy of CFA Application Forms A/B/Special Access Completes Addition to the Fire Fighting Appliance Fleet Operational Justification
FINE TUNE FINE TUNE FINE TUNE YOUR APPLICATION		
June	<input type="checkbox"/>	<ul style="list-style-type: none"> Brigade/ Group confirms quotes
	<input type="checkbox"/>	<ul style="list-style-type: none"> Brigade/ Group discusses/ confirms modifications with Group / Operations Officer/ Operations Manager so all are well aware of what is coming
June 4 th	<input type="checkbox"/>	<ul style="list-style-type: none"> Closing date for applications to be forwarded to Operations Manager Brigade submits application by 4th June
PROCESSING OF APPLICATIONS		
June 5 th – 10 th		<p>DPCs have met to prioritise District's applications - <i>that's why you talked about it with Group!</i></p> <ul style="list-style-type: none"> Assistant Chief Officers provide comments and send to CFA Project Coordinator CFA VESEP Steering Committee members approve projects. Decisions endorsed by Chief Officer EMV forwards agencies' recommendations to Minister for Emergency Services
August		
Mid-September		<ul style="list-style-type: none"> Anticipated Ministerial announcement after notifying local Members of Parliament Successful Brigades receive written funding offer. Unsuccessful brigades advised.



SAMPLE BUSINESS PLAN 2018



NB: Each CFA District will most probably have a local pro-forma. Please check with your Regional Finance & Administration Manager to ask for a copy of their Business Plan form.

Providing a simple A4 page document allows transparency and indicates how the Brigade funds are managed and targeted towards new projects. It protects funds raised to replace brigade items.

SAMPLE BASIC BUSINESS / FINANCIAL PLAN

Brigade Name:	Brigade No:	Date:
District:	Region:	

Bank account name & number			
Account balance	<i>as per current date:</i>	\$	
	<i>as per 30/06/2017:</i>	\$	
	<i>difference</i>		\$

Last three year's financial summary			
	Receipts	Expenses	Profit or Loss
2017 - 2018	\$	\$	\$
2016 - 2017	\$	\$	\$
2015 - 2016	\$	\$	\$

How are you planning to use the funds?
<i>e.g. chainsaw, wet weather gear, toilet, new engine bay, FCV, kitchen</i>

Anticipated cost of project/s	
1.	\$
2.	\$
3.	\$

Fundraising methods planned
<i>e.g. seek targeted donations from community; wood raffles x 3, VESEP grant; operate parking for local market; provide BBQ lunches & morning teas for local market/rodeo; hold a rock 'n roll dance.</i>

Signed			
Captain	<i>Name</i>	<i>Signature</i>	<i>Date</i>
Secretary	<i>Name</i>	<i>Signature</i>	<i>Date</i>

A Word version of this document is available at www.vfbv.com.au/vesep.php



VOLUNTEER FIRE BRIGADES VICTORIA
assisting CFA Brigades and Groups
with a timely application for
VESEP funding



VOLUNTEER EMERGENCY SERVICES EQUIPMENT PROGRAM

SPECIAL ACCESS APPLICATION GUIDELINES 2018

Not enough money to contribute to a VESEP application but your Brigade / Group really needs the VESEP funding to contribute towards the total cost of a critical item of equipment or station improvement?

Need **financial assistance** with a VESEP application?

NO WORRIES!

Recognising that many Brigades/Groups are unable to raise the necessary contribution for a VESEP project, the CFA VESEP Steering Committee has come to your assistance. They have made allowance for a Special Access Grant.

In other words, Brigades/Groups not flushed with funds can nominate how much they can contribute, if anything at all, towards the project, and request a special access grant to help with the remainder of the Brigade/Group contribution.

HOW DOES IT WORK?

You can receive financial assistance towards your project item if you meet the **Special Access Criteria** detailed on the Special Access Application form:

- Talk to your District OO/OM about your situation and your plans to seek their justification of your special access application.
- Describe & document why you're unable to make the full brigade contribution.
- List any purchases over \$1000 you made over the last three years.
- Detail what fundraising activities you've been involved in over the last three years.
- Provide a copy of Brigade / Group Audit Financial Reports over the last three years.
- Obtain the endorsement of your Operations Manager & Assistant Chief Officer.

Contact your District OO/OM if you want to progress
a **VESEP Special Access Application**

CFA provided a copy with the VESEP mail-out to your Brigade / Group

It's available also on the VFBV VESEP page



VOLUNTEER EMERGENCY SERVICES EQUIPMENT PROGRAM

VFBV HELP WITH CFA VESEP WEB PAGES

*LOG IN TO
BRIGADES ONLINE
THEN START
HERE*



<http://cfaonline.cfa.vic.gov.au/mycfa/Show?pageId=bovVehicleAbout>
 CFA: Brigades Online / Brigade / Property and Equipment / Brigade Owned Vehicles / Current VESEP Details
 Then, to obtain appropriate document with details of item you're seeking, from the panel on left select:



EQUIPMENT INFORMATION

search this web page if looking for

Amenities & Minor Works

- VESEP - Minor Works
- VESEP - Volunteer Amenities
- VESEP Generator – x4 pages

Fire & Incident Management

- VESEP FCV - Common Vehicle Weights Table
- VESEP GVM Weight Proforma
- VESEP - Field Command Vehicle – Brigade Build Version
- VESEP - Field Command Vehicle – Standard Build

Firefighting Equipment

- VESEP Big Fill Trailer Tandem
- VESEP General Purpose Trailer
- VESEP - Remote Area Lighting System
- VESEP - Thermal Imaging Camera

TANKER INFORMATION

search this web page if looking for

Light Tanker

- VESEP - Light Tanker- Crew Cab
- VESEP - Light Tanker- Crew Cab Detailed Specification

Medium Tanker

- VESEP - Medium Tanker
- VESEP - Medium Tanker Specification

Tanker Costs

- VESEP – 2018/19 -Tanker Costs

Ultra Light Tanker

- VESEP - Ultra Light Tanker (Landcruiser)
- VESEP - Ultra Light Tanker Detailed Specification

SPECIALIST APPLIANCES

search this web page if looking for

Big Fill

- VESEP - Big Fill Detailed Specification
- VESEP - Big Fill

Multi-purpose Vehicles

- VESEP – Multipurpose Vehicle
- VESEP Field Hygiene Unit



VOLUNTEER EMERGENCY SERVICES EQUIPMENT PROGRAM

VESEP APPLICATION- SUPPORTING DOCUMENTS

1. **Brigade letter on Brigade letterhead to accompany your application**
to District HQ re Application for *your project item*

Sample contents of letter:

With our application is the supporting documentation required.

In addition we submit a few other details:

1. Financial situation/ statement/ Business Plan / Hardship Application
2. Support from Neighbouring Brigades & Group
3. Support from Catchment Officer

Yours sincerely

2. **Completed VESEP 2018/19 Application Form A or B** (*1 page available in Word format*)
and if necessary, completed **Addition to the Fire Fighting Appliance Fleet Operational Justification**

3. **Quotation** - copy of quote from *supplier* indicating all inclusions, but excluding GST

4. **Copy of most recent Bank Statements**

6. **Copy of Brigade Financial Plan** *indicating where the brigade monies are being directed*
and if necessary, include your **Hardship Application**.

7. **Supporting Documents you provide re your Brigade/Group**

- *provide a few details / or a statement for each point*

- Name of Brigade / Group & item sought
- A few details about the Brigade
 - Group
 - Shire
 - Vegetation types
 - Fire risks
 - Traffic - if congestion is an issue
 - Victorian Risk Register rating - if applicable
- How the equipment/vehicle/project would be helpful in light of all this information.

Brigade Information - *provide a few details for each point*

- How will your brigade consistently crew and operate vehicles and/or equipment?
- Will the vehicle be housed in the fire station?
- Does the vehicle meet the Regional Strategic Resourcing Plan?
- Brigade Turnouts per year?
- Time distance from next neighbouring Brigade

Selection Criteria - *provide a few details for each point (See "CFA Guidelines" pg 3-4)*

- Needs assessment
- Risk assessment
- Ability to crew & operate- further details
- Benefit to community / catchment
- Does item fall within Brigade/Group core responsibilities?
- How the project will enhance your operational readiness/ service delivery



VOLUNTEER FIRE BRIGADES VICTORIA
assisting CFA Brigades and Groups
with a timely application for
VESEP funding



VOLUNTEER EMERGENCY SERVICES EQUIPMENT PROGRAM

CASE STUDIES

The VFBV website will continue publishing and rolling out new Case Studies from Brigades and Groups who were recipients of previous VESEP grants

The Case Studies are provided by volunteer members to provide inspiration and support

- ✿ in each of the five VESEP Categories
- ✿ by providing recommended tips / handy hints
- ✿ What the Brigade or Group thought made their application successful

Check out www.vfbv.com.au/vesep.php on a regular basis to read how others succeeded with their application

VOLUNTEER EMERGENCY SERVICES EQUIPMENT PROGRAM

VFBV VESEP SUPPORT CONTACT DETAILS

VFBV Application Help Pack	Downloadable at www.vfbv.com.au/vesep.php A paper copy is available on request. Call VFBV Office 9886 1141
Email support	vesep@vfbv.com.au
Phone support	VFBV Support Officer <i>North East</i> : Michelle Ryan 0409 109 447 VFBV Support Officer <i>South East</i> : Mark Dryden 0428 767 258 VFBV Support Officer <i>South West</i> : Peter Sharman 0428 751 652 VFBV Support Officer <i>West</i> : Chris Dent 0407 334 685 VFBV Support Officer <i>North West</i> : Glenn Mercer 0409 119 477

CFA VESEP CONTACT DETAILS

Brigades Online	Brigade/ Property & Equipment/Brigade Owned Vehicles/ Current VESEP Details <i>then choose appropriate section for your project:</i> Tanker Information <i>or</i> Equipment Information <i>or</i> Specialist Appliances http://cfaonline.cfa.vic.gov.au/mycfa/Show?pagelD=bovVehicleAbout
Phone support	Dianne Frost, CFA VESEP Project Coordinator PO Box 701 Burwood East Vic 3149 Ph: 03 9262 8630 Email: d.frost@cfa.vic.gov.au
Your Operations Manager	or Operations Officer Check with your CFA District Office
Minor Works Facilitator	Bruce Rowley VESEP Minor Works Project Manager - Land and Buildings PO Box 701 Burwood East Vic 3149 Ph: 03 5833 2425 0419 578 654 Email: b.rowley@cfa.vic.gov.au



TABLE OF CONTENTS

ADDENDUM 1

CFA INFORMATION SHEETS

(Visit CFA website (link on page 10) to check more detail)

1	VESEP – Light Tanker Specifications
2	VESEP Medium Tanker Specifications
3	Tanker Costs
4	Ultra Light Tanker Specifications
5	FCV Common Vehicle Weights
6	VESEP FCV – Brigade Build Specifications
7	VESEP FCV – CFA Standard Build Specifications
8	VESEP Big Fill Trailer Tandem Axle Specifications
9	VESEP General Purpose Trailer Specifications
10	VESEP Remote Area Lighting System
11	VESEP Field Hygiene Unit

Overview

A new appliance to the CFA fleet, this crew cab light tanker has a nominal 1,700 litre tank which will include a new body and a new diesel powered pump. The body is mounted on an Isuzu NPS 75-155 4 x 4 crew cab chassis. The body and cab chassis conform to CFA operational safety standards.

Cab Chassis

Isuzu NPS 75-155 cab chassis of 4WD (4x4) crew cab configuration and 7.5T GVM, powered by a turbocharged diesel engine with nominal maximum power output: 114 kW @ 2,600 RPM and nominal maximum torque output: 419 Nm @ 1,600 – 2,600 RPM.

Body

The bodies in this program are new with fabricated aluminium tray frame and roll-over protection frame. The specifications include a 1,700 litre nominal fabricated polypropylene water tank with baffles for surge protection, an electric start water-cooled Kubota D902 diesel powered GAAM Mk150 pump capable of delivering 450 lpm @ 700 kPa. The bodies have roll-over protection bar, crew protection system including electrically activated crew protection sprays, cabin mounted radiant heat shielding curtains, a low level water warning alert system, dual pump controls plus pump start facility in cabin, permanently coupled suction hose, dead hose reel, drink cooler, double width stowage locker (nearside) and slide-out locker (offside).

The bodies can have several optional fitments at Brigade cost. The options as listed: Live hose reel (in lieu of dead hose reel), Class "A" 'Quenchmaster' foam system. The tanker is supplied fully stowed with the exception of drinking water and CFA map books.

Visual Example



Indicative Cost

Cab Chassis Costs Funding By Brigade & VESEP \$81,600

Funding Break up

Brigade Contribution \$27,200
Total Grant Contribution \$182,800

Total Project Costs \$210,000

Indicative price is at April 2018 (excludes GST)
Cost escalation to point of build in 2018/19 allow up to 10% increase

Overview

Each Medium Tanker project includes a cab chassis and body with a diesel powered pump. The body is mounted on a Hino GT 500 1322 or equivalent.

The body and cab chassis are to conform to CFA operational standards. The vehicle is licensed to carry five personnel including the driver and is designed primarily for a wildfire role.

Cab Chassis

Hino GT 500 1322 cab chassis of 4WD (4x4) turbo charged diesel engine with six speed automatic transmission and two speed transfer case (4x4). Incorporates five (5) person crew – two in the front and 3 in rear all fitted with lap/sash seatbelts. The cab is fitted with an internal “B” pillar intermediate support bar. Radiant heat protection curtains are fitted to all cabin windows and the vehicle is fitted with a spray protection system with switch activation from cabin and crew tray area.

Body

- Polyethylene rota moulded water tank, 2350 litres capacity including 650 litres of vehicle/crew spray protection water c/w baffle bones for surge protection.
- Fabricated steel/aluminium tray frame and external roll over protection bar.
- Class A Foam around-the pump proportioning system. Foam drum rack capacity; Two (2) x 20 litre carboys.
- 2 staged fire fighting pump with air-cooled diesel engine. Nominal output 900l/min @ 700kpa
- Water-cooled diesel driven Ultra High Pressure System (UHPS) (nom. 25 l/min @ 100 bar) connected to 1 x 12mm 60m electric rewind live hose reel mounted above tray OS rear and fitted with aspirating fog gun nozzle.
- 1 x electric bull bar mounted monitor fitted with adjustable nozzle (100-450 l/min) c/w in cabin joystick controller.
- Rear deliveries – 1 x 38mm external lug and 2 x 65mm Storz.
- 1 x electric rewind live hose reel c/w 20m of 25mm hose mounted above tray NS rear.
- Aluminium fabricated above tray lockering / stowage including multi function ladder and chainsaw
- Dead hose reel off side rear under tray
- Electric priming pump
- Tray mounted crew protection drop down awning
- BA Bracket (optional item at Brigade cost)



Indicative Costs

Indicative price is at April 2018 (excludes GST)

Cost escalation to point of build in 2018/19 allow up to 10% increase

Additional Tanker	Funding	Replacement Tanker	Funding
Brigade Contribution	\$123,333	Brigade Contribution	\$ 50,000
Total Grant Contribution	\$246,667	Total Grant Contribution	\$320,000
Total Project Cost	\$370,000	Total Project Cost	\$370,000

MEDIUM TANKER



Hino 1322 GT



Rural firefighting vehicle with sufficient water and pumping capacity for grass, bush and low complexity structural environments. Can be used in "pump and roll" or static operational modes.



www.cfa.vic.gov.au

COUNTRY FIRE AUTHORITY
4 Lakeside Drive Burwood East VIC 3151
PO Box 701 Mt Waverley VIC 3149

April 2018

MEDIUM TANKER

Cab Chassis: Hino 1322 GT 500 Series 4x4
Crew Cab Chassis

GVM: 13,000 kg

Dimensions: Length 7.34 m, Height 3.0 m

Wheelbase: 3,850 mm

Crew: 5 person (Individual Bucket Seating)

Engine: Turbocharged, Intercooled 7.684 L,
6 Cylinder Diesel, c/w Diesel Particulate
Active Reduction (DPR) Emission Control

Nett Power: 158 kW @ 2,400 RPM

Nett Torque: 637 Nm @ 1,500 RPM

Transmission: 6 Speed Automatic

Main Pump: Two Stage Centrifugal Pump/Air Cooled
Diesel Engine

Pump Duty: 900 L/m @ 700 kPa

Ultra High Pressure Pump: 25 L/m @ 100 bar, c/w 60 m Ø12 mm
Electric Rewind Hose Reel

Primer Pump: Electric Priming Pump

Water Tank: 2,350 L Polyethylene Rota Moulded

Foam System: Around the Pump Inductive Class "A" Foam
System (2 x 20 L)

Body: Galvanised Steel Tray Frame & Roll Bar
Stainless Steel Plumbing
Aluminium Panelling & Lockers
In Cabin Joystick Controlled Bull Bar Monitor
20 m Ø25 mm Electric Rewind Live Hose Reel
Dead Hose Reel
5.2 m Multi-Function Ladder
9 m Ø75 mm Pre-Connected Hard Suction
Cabin, Deck & Rear Control Panels
Full LED Body Lighting
CanBus Multiplexing

Crew Protection: Cabin Internal B Post Stiffener
In Cabin & Deck Radiant Heat Protection
Curtains
Full Vehicle Water Spray Deluge System

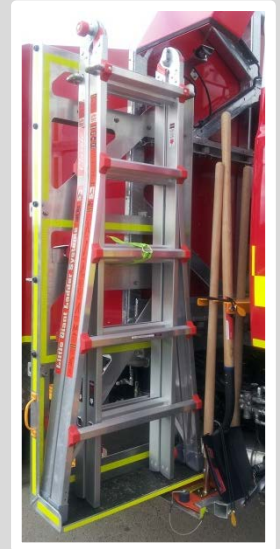
Min. Lic. Class: Medium Rigid



NS1 & 2 Lockers



OS1 & 2 Lockers



UHPS

Storage Equipment

- Breathing Apparatus (Optional)
- Adaptors
- Eskey / Welfare
- Salvage
- Forcible Entry Tools
- Branches
- Chainsaw
- Rescue
- Hose (4 x Ø65 mm, 5 x Ø38 mm)



Tanker Costs – VESEP 2018/19



Pricing - Indicative @ April 2018

Funding Source	ULT Landcruiser	Light Tanker Crew Cab	Medium Tanker Addition to Fleet	Medium Tanker Replacement Tanker
Brigade	\$21,500	\$27,200	\$123,333	\$50,000
Grant Contribution	\$118,500	\$182,800	\$246,667	\$320,000
Total	\$140,000	\$210,000	\$370,000	\$370,000

Cost escalation to point of build in 2018/19 allow up to 10% increase.
Options available on some appliances at Brigade cost

Specifications

Detailed information regarding these appliances is available via Brigades on line:-
Brigade, Property & Equipment, Brigade Owned Vehicles, VESEP, Tanker information

Grant Formulas

ULT, Light & Medium Tanker (Replacements)

Cab Chassis

- \$2 CSESP to \$1 Brigade to a maximum VESEP contribution of \$100,000

Body

- Funded by grant contribution

Medium Tanker – Additions to Fleet

Body & Cab Chassis - \$2 CSESP to \$1 Brigade



Overview

The Ultra-Light Tanker delivers increased water, enhanced fire suppression capability and ergonomic features. This vehicle is licensed to carry 2 people including the driver. The vehicle has a manual transmission and does not require an endorsed licence to drive. The body and cab chassis conform to CFA operational safety standards. These appliances are not designed to have personnel operating from the tray area. The ULT's primary role for wildfire is to perform first attack on spot sized / remote / difficult-to-access types of fires where these fires are safe to approach. It is also designed to perform support for back operations, mopping up and patrolling duties.

Cab Chassis – Toyota LandCruiser

Toyota LandCruiser 70 series Workmate 4x4 MY2018 cab chassis. The Toyota LandCruiser is an upgraded 3.95 tonne GVM cab chassis with air-conditioning, aftermarket wide alloy wheels, all-terrain tyres and 110 litre fuel tank. The vehicle includes reversing camera, reversing alarm, map light, 2 x fire blankets, 2 x drink bottle holders, CFA map book holder, siren and emergency light controller, portable radio charger and CFA radio speakers.

Body Features

- Full aluminium construction, diesel engine pump, locker and pump panel lights to switch on with parking lights.
- Full LED lighting including emergency lights, colour coded valve handles and angled pump control panel.
- 550 litre water capacity, diesel pump, live hose reel with 30mx19mm Neider light weight hose and Spray-Flo branch, 2 x 38mm deliveries, TFT Quadrafog selectable flow nozzle with foam aspirator attachment, Quenchmaster foam system, LED work lights, 6m permanently connected suction hose.
- Supply and installation of radio, lights and sirens
- Supply and fitment of decals
- Chainsaw & ancillary equipment

Provision of tools and equipment

4 lockers, 2 x rake hoes, shovel, 2 x drip torches, tool box, emergency Class "A" foam kit, first aid kit, collapsible knapsack, aluminium service hydrant, 4.5kg AB dry chemical extinguisher, Hazmat guidebook.



Indicative Costs

Cab Chassis Costs Funding By Brigade & VESEP	\$64,500
Funding Break up	
Brigade Contribution	\$21,500
Grant Contribution	\$118,500
Total Project Costs	\$140,000

Indicative prices as at April 2018 (excludes GST)
Cost escalation to point of build in 2018/19 up to 10% increase

Weight Loadings for Common Diesel 4x4 FCV's

Vehicle	Gross Vehicle Mass (GVM)	Tare Weight (Standard Vehicle – No Accessories)	Available Payload
Nissan Patrol Ti, V8	3500kgs	2715kgs	785kgs
Nissan Navara RX, 4WD Double Cab, Auto, Pick Up	2910kgs	1895kgs	1015kgs
Nissan Navara SL, 4WD Double Cab, Manual/Auto, Pick Up	2910kgs	1931kgs / 1937kgs	979kgs / 973kgs
Nissan Navara ST, 4WD Double Cab, Manual/Auto, Pick Up	2910kgs	1936kgs / 1942kgs	974kgs / 968kgs
Nissan Navara ST X, 4WD Double Cab, Manual/Auto, Pick Up	2910kgs	1973kgs / 1979kgs	937kgs / 931kgs
Nissan Navara RX, 4WD Double Cab, Manual/Auto, (Cab Chassis only)	2910kgs	1763kgs / 1783kgs	1144kgs / 1127kgs
Toyota Prado GX, Manual/Auto	2990kgs	2230kgs / 2240kgs	760kgs / 750kgs
Toyota Prado GXL, Manual/Auto	2990kgs	2315kgs / 2325kgs	675kgs / 665kgs
Toyota Prado VX, Auto	2990kgs	2385kgs	605kgs
Toyota Landcruiser LC200 GX, Auto	3350kgs	2640kgs	710kgs
Toyota Landcruiser LC200 GXL, VX, Auto	3350kgs	2740kgs	610kgs
Toyota Landcruiser LC70 Wagon Work Mate	3060kgs	2275kgs	785 kgs
Toyota Landcruiser LC70 Wagon GXL	3060kgs	2265kgs	795 kgs
Toyota Landcruiser LC70 Double Cab Work Mate (Cab Chassis only)	3300kgs	2190kgs	1110kgs
Toyota Landcruiser LC70 Double Cab GXL (Cab Chassis only)	3300kgs	2175kgs	1125kgs
Toyota Hilux Work Mate, Double Cab, Manual/Auto	3000kgs	2045kgs / 2045kgs	955kgs / 955kgs
Toyota Hilux SR, Double Cab, Manual/Auto	3000kgs	2050kgs / 2045kgs	950kgs / 955kgs
Toyota Hilux SR 5, Double Cab, Manual/Auto	3000kgs	2040kgs / 2045kgs	960kgs / 955kgs
Toyota Hilux Work Mate, Double Cab, Auto, (Cab Chassis only)	3000kgs	1950kgs	1050kgs
Toyota Hilux SR, Double Cab, Manual/Auto, (Cab Chassis only)	3000kgs	1955kgs / 1955kgs	1045kgs
Holden Colorado LS, Double Cab, Manual/Auto	3150kgs	2072kgs / 2065kgs	1078kgs / 1085kgs
Holden Colorado LT, Double Cab, Manual/Auto	3150kgs	2109kgs / 2102kgs	1041kgs / 1048kgs
Holden Colorado LTZ, Double Cab, Manual/Auto	3150kgs	2128kgs / 2121kgs	1022kgs / 1029kgs
Holden Colorado LS, Double Cab, Manual/Auto (Cab Chassis only)	3150kgs	1927kgs / 1920kgs	1223kgs / 1230kgs
Ford Ranger XL, Double Cab, 3.2L, Manual/Auto	3200kgs	2108kgs / 2133kgs	1092kgs / 1067kgs
Ford Ranger XL Plus, Double Cab, 3.2L, Auto	3200kgs	2210kgs	990kgs
Ford Ranger XLS, Double Cab, 3.2L, Manual/Auto	3200kgs	2111kgs / 2136kgs	1089kgs / 1064kgs
Ford Ranger XLT, Double Cab, 3.2L, Manual/Auto	3200kgs	2202kgs / 2227kgs	998kgs / 973kgs
Ford Ranger XL, Double Cab, 3.2L, Manual/Auto (Cab Chassis only)	3200kgs	1982kgs / 2007kgs	1218kgs / 1193kgs
Ford Ranger XL Plus, Double Cab, 3.2L, Auto (Cab Chassis only)	3200kgs	2086kgs	1114kgs
Mitsubishi Triton GLX Double Cab Manual/Auto	2900kgs	1920kgs	980kgs
Mitsubishi Triton GLX+ Double Cab Auto/Auto	2900kgs	1915kgs	985kgs
Mitsubishi Triton GLS Double Cab Manual/Auto	2900kgs	1935kgs	965kgs
Mitsubishi Triton GLX Double Cab Manual/Auto (Cab Chassis only)	2900kgs	1795kgs	1105kgs
Mitsubishi Pajero GLX/GLS Manual / Auto	3030kgs	2255kgs	775kgs

Weight Loadings for Common Diesel 4x4 FCV's

Vehicle	Gross Vehicle Mass (GVM)	Tare Weight (Standard Vehicle – No Accessories)	Available Payload
Mazda BT 50 XT, Double Cab, 3.2L Manual/Auto	3200kgs	2022kgs / 2036kgs	1178kgs / 1164kgs
Mazda BT 50 XTR, Double Cab, 3.2L Manual/Auto	3200kgs	2091kgs / 2105kgs	1109kgs / 1095kgs
Mazda BT 50 GT, Double Cab, 3.2L Manual/Auto	3200kgs	2104kgs / 2118kgs	1096kgs / 1082kgs
Mazda BT 50 XT, Double Cab, 3.2L, Manual (Cab Chassis only)	3200kgs	1932kgs	1268kgs
VW Amarok Core, Dual Cab, Auto	3040kgs	2022kgs	1018kgs
VW Amarok Core Plus, Dual Cab, Auto	3040kgs	2052kgs	988kgs
VW Amarok V6 Sportline, Dual Cab, Auto	3080kgs	2129kgs	951kgs
VW Amarok V6 Highline, Dual Cab, Auto	3080kgs	2171kgs	909kgs
VW Amarok V6 Ultimate, Dual Cab, Auto	3080kgs	2212kgs	868kgs
Isuzu D-Max SX & LS-M, Double Cab Manual/Auto	2950kgs	2026kgs / 2026kgs	924kgs / 924kgs
Isuzu D-Max LS-U, Double Cab Manual/Auto	2950kgs	2001kgs / 2001kgs	949kgs / 949kgs
Isuzu D-Max SX, Double Cab Manual/Auto (Cab Chassis only)	2950kgs	1886kgs / 1891kgs	1064kgs / 1059kgs

Definition & Requirements of a Field Command Vehicle

A four wheel drive off road vehicle of an appropriate size to operate in the bush. An FCV would be used in a range of incident management roles including; incident control in a level 1 fire, Operations Officer, Sector Commander, Strike Team Leader, Ground Observer or Staging Area activities for level 2 or 3 incidents.

An FCV is to be built to the following specifications:

- Wagon or twin cab conventional vehicle diesel with snorkel intake
- Must be licensed to carry 4 or 5 people
- White or Red in Colour
- Fire Blankets
- Standard Light Bar, Grill lights & siren (funded separately)
- Two CFA radios, portable and one UHF radio (funded separately)
- Standard CFA Livery (funded separately)

Other Information

- All applications must be supported by a GVM weight pro forma as GVM upgrades will not be considered for any FCV vehicle.
- Brigades/Groups to supply VESEP Project Coordinator quotes for all components of the project. Coordination required between Brigade/Group and suppliers.
- Additional items will require District approval and be included within weight calculations

The GVM weight pro forma is available on Brigades on Line:- Brigade / Property & Equipment / Brigade owned vehicle / Equipment information. GVM upgrades are not permitted on any FCV.

For replacement vehicles previously funded through the program the \$2 : \$1 funding formulae will now only be applied to the net change over value (ie: cost less trade in value)



Grant Formula

Equipment grants are funded by VESEP & Brigade, \$2 VESEP to \$1 Brigade with a maximum VESEP contribution of \$150,000.

Definition & Requirements of a Field Command Vehicle

Overview

- A FCV is a four wheel drive off road vehicle of an appropriate size to operate in the bush.
- The FCV delivers enhanced incident management capability and ergonomic features. This vehicle is licensed to carry 5 people including the driver.
- The vehicle has a six speed automatic transmission and does not require an endorsed license to drive.
- The FCV is used in a range of incident management roles including; incident control in a level 1 fire, Operations Officer, Sector Commander, Strike Team Leader, Ground Observer or Staging Area activities for level 2 or 3 incidents.

Cab Chassis – Ford Ranger 4x4 Utility (White)

- Five Star ANCAP Rating
- 3.2l Turbo Charged Diesel Engine
- 6 Speed automatic Transmission
- Dual batteries, reversing alarm & camera,
- Bluetooth, hands free phone and voice control
- AUX/USB/iPod integration
- Cruise control with steering wheel mounted buttons
- eLocking Rear Differential
- Dynamic Stability Control (DSC)
- Emergency Brake Assist
- Daytime running lights
- Heavy Duty canvas seat covers
- Side Steps
- Towbar with flat pin wiring plug
- All-terrain tyres
- Two CFA Tait radios
- Driving Lights (RF Comms Safe Compatible)
- Reverse Camera
- GVM 3200kg



Warning lights, Siren System & Livery

(These items are funded separately)

- Light Bar Multi Colour 360 Degree Red/Blue Alternating
- Grill lights Multi Colour Red/Blue Alternating
- Siren System 100w with siren/lights integrated controller
- Standard CFA Livery
- Registration





Body Options

- Purpose built powder coated service body with lift up doors. Transferable between cab chassis.
- Full aluminium construction
- Roll out under tray rear drawer
- Rubber matting
- Tie down points
- 240v Invertor
- Under tray locker
- LED internal locker lights main compartment
- LED work lights
- First aid kit
- 4.5kg AB dry chemical extinguisher
- One Tait Portable Radio and Charger
- Six USB charging points (4 inside cabin, 2 inside body)
- Central locking of all above tray locker doors wired to Ford remote
- Adjustable shelves
- Fire protection for cab chassis electrical wiring looms
- ENGEL Fridge
- ENGEL Slide
- VASS Certification
- One UHF radio



Body Layout Options Option 1+



NEARSIDE



REAR



OFFSIDE

Option 2



NEARSIDE



REAR



OFFSIDE



Other Information

- These vehicles are fully project managed by CFA Headquarters and delivered to the local District Office/ District Mechanical workshop when completed. This vehicle is a standard design therefore additional items or design changes will not be accommodated.
- There will be no requirement for Brigades/Groups to obtain specific quotes for any components.
- GVM upgrades will not be considered for any FCV vehicle.
- Light bar, siren, livery and radios are funded separately and do not require a brigade contribution.
- All additional items to be stowed will require District approval and not cause the GVM of the FCV to be exceeded
- For replacement vehicles previously funded through the CSESP or VESEP program the \$2 : \$1 funding formulae will be applied to the net change over value (ie: cost less sale value exc GST). The existing CSESP/VESEP FCV vehicle to be disposed of by the Brigade/Group. See example below.

Grant Formula

Equipment grants are funded by VESEP & Brigade, \$2 VESEP to \$1 Brigade with a maximum VESEP contribution of \$150,000.

Indicative Costs

Brigade Contribution	\$26,666
Grant Contribution	\$53,334
Total Project Costs	\$80,000

Example of previously funded CSESP/VESEP vehicle formula.

Total Project Cost	\$80,000
Less estimated sale price	\$20,000
Total Project Application	\$60,000
Brigade Contribution	\$20,000
Grant Contribution	\$40,000

Indicative prices as at April 2018 (excludes GST)

Cost escalation to point of build in 2018/19 up to 10% increase

The trailer pump is tandem axle, equipped with a GAAM Mk 500 water powered by an Isuzu 4LE2 water cooled diesel engine with a nominal output of 2,000 L/min @700 kPa. Primarily utilised for water fill points on the fire ground however can also be connected to a hydrant, if necessary.

Trailer

- Fabricated galvanized steel / aluminum chequer plate tray frame and drawbar
- Tandem axle c/w mechanical override, hydraulic operated, drum brakes
- Jockey wheel, lockable tow coupling and 7 pin electrical connection
- Retractable rear end stabilizers

Pump and Plumbing

- Isuzu GAAM Mk 500 38kW water cooled diesel engine c/w noise suppression cowling
- 60L diesel fuel tank
- Hale electric priming pump
- 2 x 65mm Storz deliveries (near side)
- 9m 100mm pre connected suction hose fitted to the rear dedicated locker behind tailgate

Electrical

- Fireco 4m extendable hand operated pneumatic light mast c/w 4 x LED lights
- Green “water point” LED strobe (mounted on top of light mast)
- NS control panel incorporating pump controls, gauges, warning lights and light switching
- Century N70ZZ battery and pre connected CTEK 240v trickle charging

Stowage

- Red painted aluminum fabricated lockering c/w gas strut assisted “hinge up” doors and LED lockering

Nearside 1 locker	Offside 1 locker
Hose (4x65mm, 2 x 65mm, 1 x 38mm)	3m x 3m CFA water point marquee
Miscellaneous adaptors	2 x folding chairs
	Miscellaneous tools, first aid kit and jump starter
General Tray	
4.5kg dry chemical extinguisher	Offside 2 Locker
10L diesel fuel container	2 x 25L eskies
Shovel, aluminium hydrant, 2 x traffic cones	Personal Gear
Forward Wheel Arch Lockers x (2)	
Wheel chocks jack and wheel brace	
Stabiliser pads	
Miscellaneous	



Indicative Cost

Brigade Contribution	\$22,917
Total Grant Contribution	\$45,833
Total Project Costs	\$68,750

Indicative price is at April 2018 (excludes GST)
 Cost escalation to point of build in 2018/19 allow up to 10% increase

It is important to note that GST is not factored into the total project costs, therefore the GST exclusive amount should be used to calculate the Brigade and VESEP contribution

Grant Formula

Equipment grants are funded by VESEP & Brigade, \$2 VESEP to \$1 Brigade with a maximum VESEP contribution of \$150,000



CFA has developed a standard technical specification for general purpose trailers for single or tandem axles. If considering an application please review the specifications to ensure compliance.

Details

The detailed technical specifications is available on Brigades on Line & CFA Intranet :-

Brigades On Line

[Home](#) > [Running a Brigade](#) > [Property & Equipment](#) > [Brigade Owned Vehicles](#) > Equipment Information

Intranet

[Home](#) > [Fire & Emergencies](#) > [Vehicles](#) > [Brigade Owned Vehicles](#) > Equipment Information

GST

It is important to note that GST is not factored into the total project costs, therefore the GST exclusive amount should be used to calculate the Brigade and VESEP contribution

Grant Formula

Equipment grants are funded by VESEP & Brigade, \$2 VESEP to \$1 Brigade with a maximum VESEP contribution of \$150,000.

The Pelican 9430 Remote Area Lighting System (RALS) is an approved CFA product.

Details

- Up to 15 hours of burn time
- 3000 Lumens of brightness
- Fully extendable mast with 360 degree rotating head
- Low Battery Warning system
- Waterproof Rubber Activation Switch
- Mast Extension Lock
- Maintenance Free LED Array with 50,000 hours of life expectancy



Pricing – Indicative @ April 2018

Costs for the unit are approximately \$1,400

GST

It is important to note that GST is not factored into the total project costs, therefore the GST exclusive amount should be used to calculate the Brigade and VESEP contribution

Grant Formula

Equipment grants are funded by VESEP & Brigade, \$2 VESEP to \$1 Brigade with a maximum VESEP contribution of \$150,000.

Overview

The Field Hygiene Unit supports the health and wellbeing of members at prolonged incidents.

- Purpose built aluminium trailer with egress ramp
- Two portable toilets
- Wash basin station
- Waste disposal bin



Indicative Costs

Funding Break up

Brigade Contribution	\$6,667
Grant Contribution	\$13,333

Total Project Costs	\$20,000
----------------------------	-----------------

Indicative prices as at April 2018 (excludes GST)
Cost escalation to point of build in 2018/19 up to 10% increase

The CFA has a specified model and supplier for Thermal Imaging Cameras.

Specifications

Model: - Draeger UCF 9000

The package includes:-

- 2 x Rechargeable battery packs
- Desk top battery charger unit
- Retractable Lanyard
- Sun shield
- In truck charging unit
- Pelican transport case



Pricing – Indicative @ April 2018

Costs for the Thermal Imaging cameras are approximately \$11,500

The CFA approved supplier for this product is Draeger Safety Pacific Pty Ltd

GST

It is important to note that GST is not factored into the total project costs, therefore the GST exclusive amount should be used to calculate the Brigade and VESEP contribution

Grant Formula

Equipment grants are funded by VESEP & Brigade, \$2 VESEP to \$1 Brigade with a maximum VESEP contribution of \$150,000.

Overview

The Big Fill incorporates an aluminium body and a new water cooled diesel engine powered pump on a new Toyota Land Cruiser cab chassis. These vehicles will be licensed to carry 2 people including the driver. The body and cab chassis conform to CFA operational safety standards.

Cab Chassis – Toyota Land Cruiser

Toyota Land Cruiser 70 Series cab chassis, turbo-diesel, manual, front wheel flares and GVM Upgrade to 3,780 kg. Fitted with alloy bull bar, bonnet protector, reversing camera monitor, headlight protectors, 3,500kg towbar, tow ball, towbar wiring, floor mats, air conditioning, intercooler guard, steering guard and engine air intake heat shield, 16" x 7" Allied Savvana rims, registration and on-road costs.

Big Fill Body

- Aluminium tray and lockers
- Decals, emergency lights, sirens, radios, scene lights, spot light, reversing beeper, reversing camera and green "Quickfill" lights
- Water cooled diesel engine powered centrifugal pump
- Pelican remote area lighting system c/w tripod and in-vehicle charger
- (4x) 2.4m clear "Heliflex" suction hoses, suction strainer, Hoenig wire basket, float and rope
- (2x) 100mm/65mm Storz spanners
- (4x) 30m x 64mm delivery hoses
- (2x) 15m x 64m delivery hoses
- (2x) 30m x 38mm delivery hoses
- Aluminium service hydrant
- Selection of hose adaptors
- (2x) witches hats
- (2x) Rake hoes
- (2x) Portable Green flashing lights
- Tow strap

- Shovel and axe
- First aid kit
- (2x) Woollen fire blankets
- Drinking water cooler
- Tool box (c/w pliers, adjustable spanner, screwdrivers)
- 4.5kg AB dry chemical fire extinguisher & bracket
- Provision for limited Brigade stowage items. Maximum 50kg (excepting crews)
- Operating Manuals



Indicative Cost

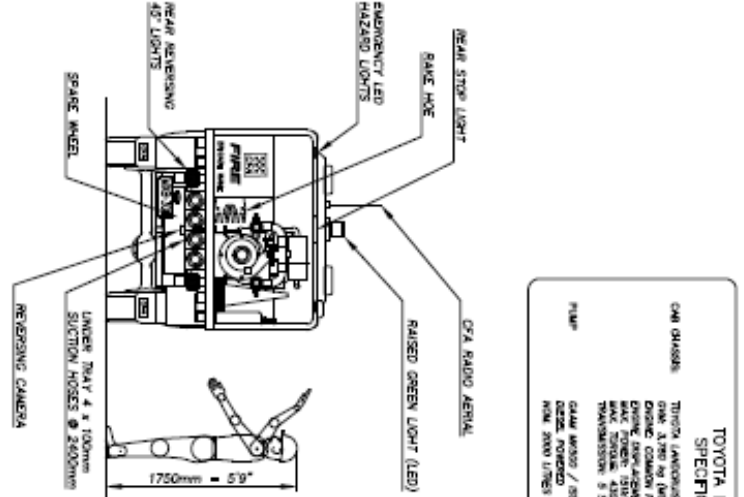
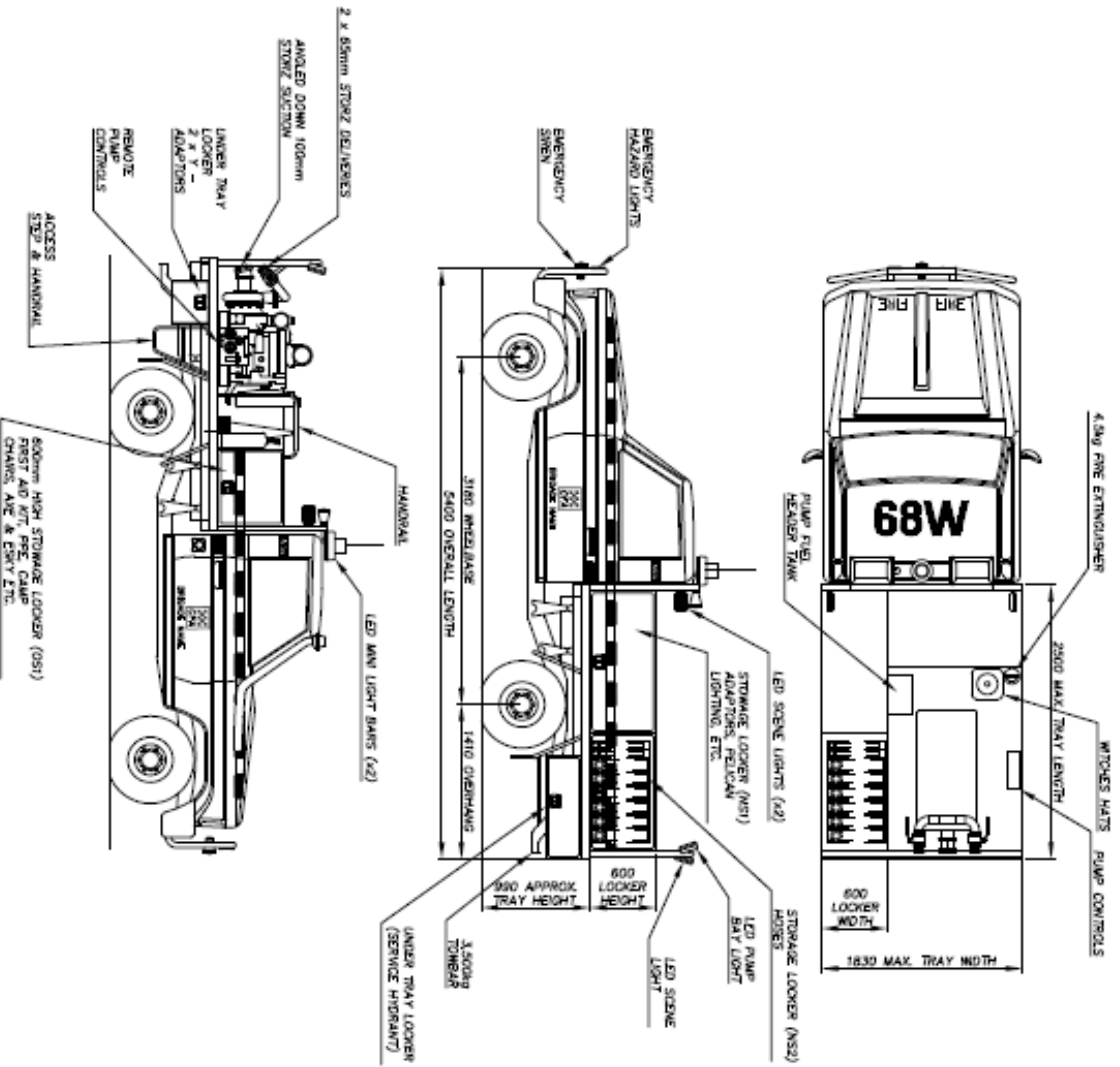
Cab Chassis Costs Funding By Brigade & VESEP	\$64,500
Funding Break up	
Brigade Contribution	\$21,500
Grant Contribution	\$128,500
Total Project Costs	\$150,000

Indicative price is at April 2018 (excludes GST)
 Cost escalation to point of build in 2018/19 allow up to 10% increase

COPYRIGHT : COUNTRY FIRE AUTHORITY - 2016
 MUST NOT BE REPRODUCED WITHOUT CONSENT

E-10814

1/1



TOYOTA BIG FILL SPECIFICATION

CAN CHASSIS: TOYOTA LANDCRUISER 79 SERIES CAN CHASSIS (OVER 3.200 IN LENGTH) (IMPACT) ENGINE: COMMON RAIL TURBO DIESEL (700L) ENGINE OPERATING WEIGHT 4.400 (TONS) (NS) MAX TOWING CAPACITY 4.000 (TONS) (NS) TRANSMISSION: 5 SPEED MANUAL. GEAR RATIO: 5/10/10/4/2/1 (NS) OIL: TOYOTA (NS) MAX ROAD SPEED / MIN : 200 KM/H

DATE: 12/01/2016	SCALE: 1:30	SCALE: 1:30	SCALE: 1:30	SCALE: 1:30	SCALE: 1:30	SCALE: 1:30	SCALE: 1:30
DESIGNER: J. HEND	DATE: 08.05.07	DATE: 08.05.07	DATE: 08.05.07	DATE: 08.05.07	DATE: 08.05.07	DATE: 08.05.07	DATE: 08.05.07
GENERAL ARRANGEMENT: UNLIMITED	GENERAL ARRANGEMENT: UNLIMITED	GENERAL ARRANGEMENT: UNLIMITED	GENERAL ARRANGEMENT: UNLIMITED	GENERAL ARRANGEMENT: UNLIMITED	GENERAL ARRANGEMENT: UNLIMITED	GENERAL ARRANGEMENT: UNLIMITED	GENERAL ARRANGEMENT: UNLIMITED
REVISION: 1	REVISION: 1	REVISION: 1	REVISION: 1	REVISION: 1	REVISION: 1	REVISION: 1	REVISION: 1

UNLESS OTHERWISE STATED	UNLESS OTHERWISE STATED	UNLESS OTHERWISE STATED	UNLESS OTHERWISE STATED	UNLESS OTHERWISE STATED	UNLESS OTHERWISE STATED	UNLESS OTHERWISE STATED	UNLESS OTHERWISE STATED
4 -	4 -	4 -	4 -	4 -	4 -	4 -	4 -
4 -	4 -	4 -	4 -	4 -	4 -	4 -	4 -
4 -	4 -	4 -	4 -	4 -	4 -	4 -	4 -

COUNTRY FIRE AUTHORITY
 ENGINEERING DEPARTMENT
 4 LAWRENCE DRIVE, BIRKWOOD EAST, VIC. 3151
 TEL: (03) 9582 8444 FAX: (03) 9582 8515



TOYOTA LANDCRUISER 4x4 GENERAL ARRANGEMENT (PROPOSAL)	SCALE: 1:30	SCALE: 1:30	SCALE: 1:30	SCALE: 1:30	SCALE: 1:30	SCALE: 1:30	SCALE: 1:30
THIRD ANGLE PROJECTION	DATE: 08.05.07	DATE: 08.05.07	DATE: 08.05.07	DATE: 08.05.07	DATE: 08.05.07	DATE: 08.05.07	DATE: 08.05.07
E-10814	A2	A2	A2	A2	A2	A2	A2
1/1	1/1	1/1	1/1	1/1	1/1	1/1	1/1

These specifications are indicative and are subject to change during tendering and manufacturing

Overview

The appliance is a multi-purpose vehicle licensed to carry five (5) crew, including the driver. The rear of the appliance can be configured to suit Brigade's specific requirements. Appliance to be stowed with equipment to secure and clean up after an incident. It is offered in three (3) versions:

- Version 1 – 4 x 4 short body (manual)
- Version 2 – 4 x 2 short body (manual)
- Version 3 – 4 x 2 long body (auto)

Cab Chassis

- Version 1 - Isuzu NPS 75-155 4x4 Crew Cab Chassis with 7.5 tonne GVM
- Version 2 - Isuzu NPR 65-190 4x2 Crew Cab Chassis with 6.5 tonne GVM (wheel based shortened to 3,395mm)
- Version 3 - Hino 921 4x2 Crew Auto cab chassis with 8.5 tonne GVM (wheel base shortened to 3,870mm)

Body

- Prefabricated aluminum framed body (SES specification)
- Storage compartments can be configured to suit user requirements (see GA drawings)
- White painted cab and body
- Rear lift up door with gas struts
- Roller access doors each side

Items included:

- Cab and body painted white
- CFA livery (decals & striping)
- Seating for 5 crew (including 3 x lap/sash seat belts in rear)
- Storage console between driver and front passenger seats
- Nearside awning
- Minor brackets and straps for Brigade stowage items
- Installation of CFA supplied radio and portable radio charger
- Registration (brigade owned vehicle)

Version 1



Version 2



Version 3





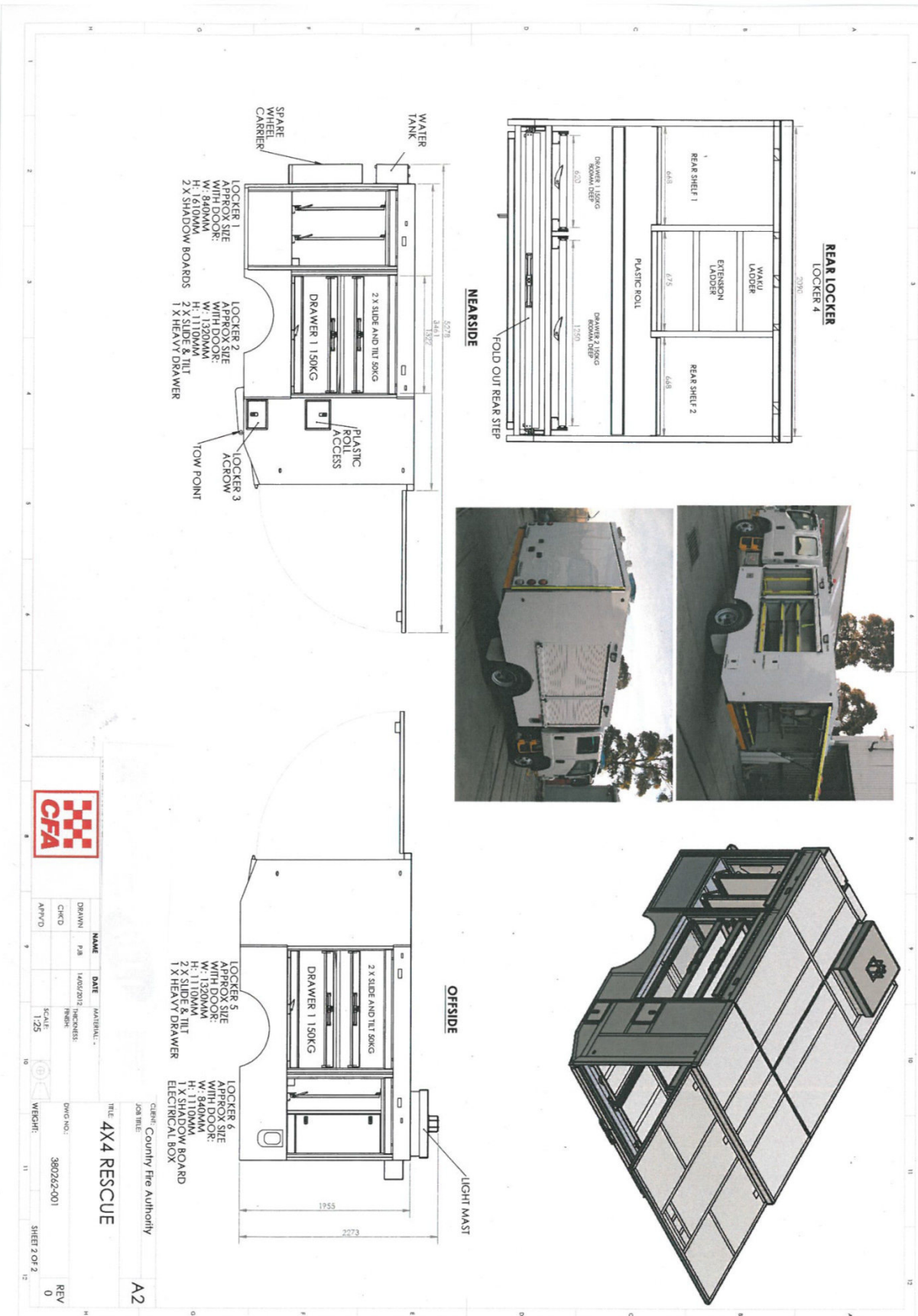
Options available at additional cost:

- Red painted cab and body
- Aluminum bullbar
- Inbuilt hydraulic powered 8kVA 240V generator system
- Inbuilt engine powered alternator with 8kVA 240V inverter system
- 240V reticulated power system
- Wheel arch lockers (x 2)
- Inbuilt 240V compressed air system (240V generator or 240V inverter system is required)
- Pneumatic light mast – 4m height, external mounting, 3 x standard LED lights, hand pump
- Pneumatic light mast – 4m height, external mounting, 3 x standard LED lights, electric pump
- Pneumatic light mast – 6m height, internal mounting, 4 x high powered LED lights, electric pump
- Pneumatic light mast – 6m height, internal mounting, 4 x high powered LED lights, robotic head, electric pump
- Version 2 - Upgrade to 7.5 tonne GVM (Isuzu NPR 75-190 4 x 2 Crew)
- Version 2 – Automated Manual Transmission (AMT)

Indicative Costs

Funding Break up	Version 1 4 x 4 Short Body Manual	Version 2 4 x 2 Short body Manual	Version 3 4 x 2 Long Body Auto
Brigade Contribution	\$ 64,000	\$ 64,000	\$68,000
VESEP Contribution	\$128,000	\$127,000	\$136,000
Total Project Costs	\$192,000	\$191,000	\$204,000

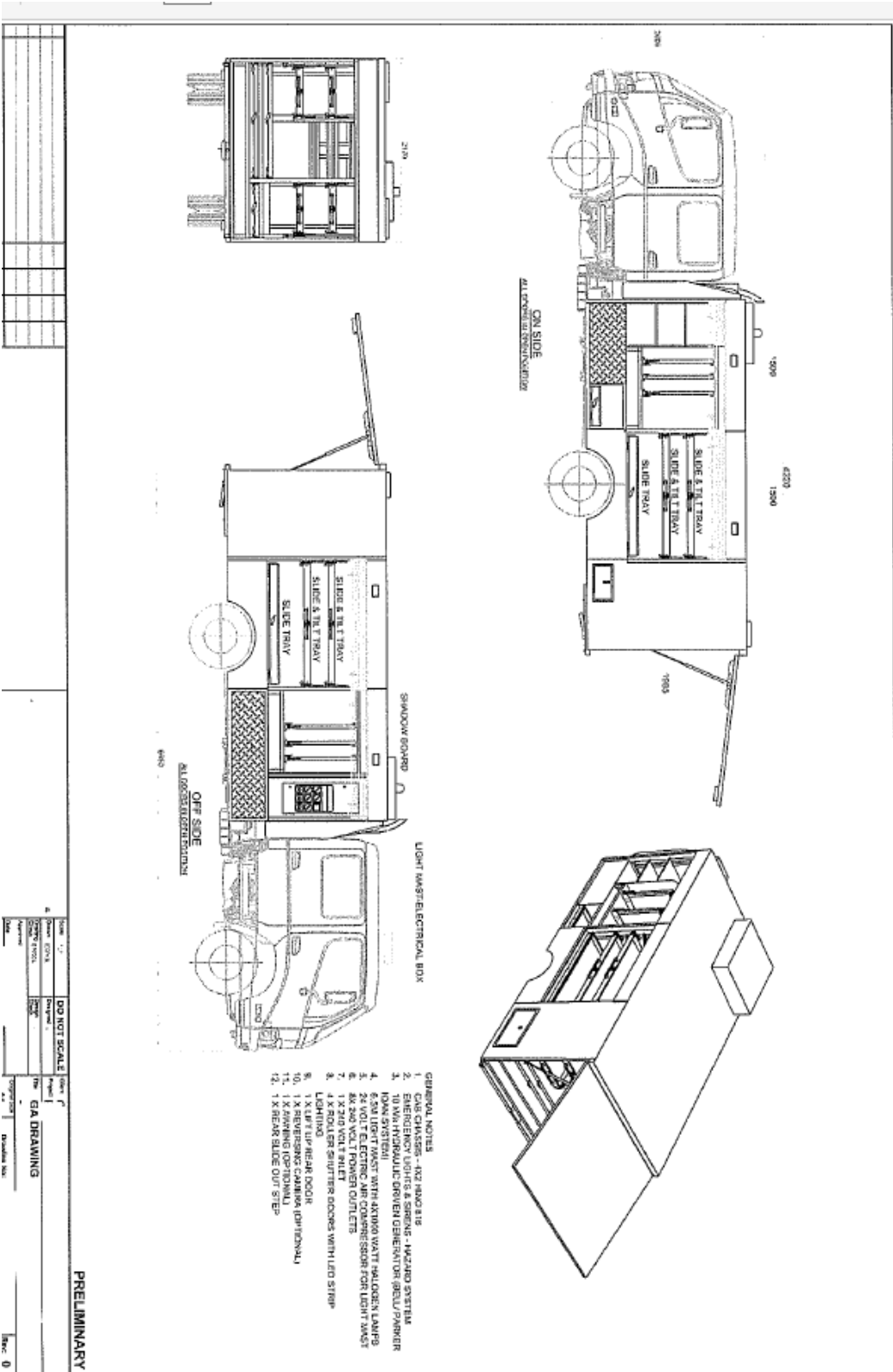
General Assembly Drawing – 4x4 short body (Version 1) and 4x2 short body (Version 2)



These specifications are indicative and are subject to change during tendering and manufacturing



General Assembly Drawing – 4x2 long body (version 3)



These specifications are indicative and are subject to change during tendering and manufacturing



VOLUNTEER FIRE BRIGADES VICTORIA
assisting CFA Brigades and Groups
with a timely application for
VESEP funding



VOLUNTEER EMERGENCY SERVICES EQUIPMENT PROGRAM

TABLE OF CONTENTS

ADDENDUM 2 **SPECIAL ACCESS GRANT**



VESEP Special Access Grants - Volunteer Emergency Services Equipment Program 2018/19

Brigade/Group Name _____ Brigade/Group No: _____
 District: _____ Region: _____
 Proposed Project _____ Date: / /

This form is to be completed with operational staff in the District

Project Costs:

Brigade Contribution (if any)	\$
Extended Credit Application (if applicable)	\$
Special Access Grant	\$
VESEP Funds:	\$
Total Project Cost:	\$

Brigade Contribution + Extended Credit Application (if applicable)
= Brigade Contribution

Special Access Grant + VESEP Grant
= VESEP Contribution

Reasons for Special Access Grants

1. District's justification for special assistance including explanation of brigades inability to fund brigade contribution

2. Details of any purchases over \$1,000 the last three years

3. Details of fund raising initiatives undertaken over the last three years

4. Copies of brigade Audit Financial Reports over the last three years attached Yes

Recommendation and Endorsement

Operations Manager Endorsement

Name: Signature Date: / /

Assistant Chief Officer Endorsement

Name: Signature Date: / /



VESEP Special Access Grant - Volunteer Emergency Services Equipment Program 2018/19

Special Access Grant Criteria:

The CFA VESEP Statewide Steering Committee is aware that for reason of remoteness and small communities many Brigades are unable to raise the necessary contribution for a VESEP project. For this reason the Committee welcomes applications to assist brigades in acquiring replacement or new equipment, upgrading brigade amenities or to undertake minor upgrades to their station.

The Criteria for Special Assistance Grants are:

1. Is the proposed project operationally justified;
2. Vehicles:
 - Is the existing tanker greater than 20 year's old?
 - Is the proposed vehicle considered to be high priority?
 - Is the existing Field Command Vehicle greater than 5 years old?
3. Equipment, Volunteer Amenities or Minor Works
 - Is the item of equipment or station improvement critical for the Brigade operation?
4. The brigade is unable to fund the required brigade contribution

Brigades are to indicate their nominated contribution amount, if any, for a project.

Checklist of Information & Documents:

- Districts justification for special assistance grant
- Reason's for brigade's inability to fund brigade total contribution
- Details of any purchases over the last three years
- Details of fund raising initiatives undertaken over the last three years
- Details of brigade Audit Financial Reports over the last three years
- Endorsement from Operations Manager & Assistant Chief Officer



VOLUNTEER FIRE BRIGADES VICTORIA
assisting CFA Brigades and Groups
with a timely application for
VESEP funding



VOLUNTEER EMERGENCY SERVICES EQUIPMENT PROGRAM

TABLE OF CONTENTS

ADDENDUM 3

2018/19 PROGRAM GUIDELINES



Volunteer Emergency Services Equipment Program (VESEP)

CFA GUIDELINES – 2018/19

Contents

	Introduction	Page 3
1	Aim	3
2	Priority	3
3	Business Rules	3
4	Selection Criteria	3
5	Endorsed Projects	4
5.1	Tankers & Big Fills	4
5.2	Specialist Appliances	4
5.3	Operational Equipment	4
5.4	Volunteer Amenities	5
5.5	Brigade Minor Works	5
6	Funding Formula	6
6.1	Tankers & Big Fills	6
6.2	Specialist Appliances & Operational Equipment	6
6.3	Volunteer Amenities	6
6.4	Brigade Minor Works	6
7	Funding Contribution Rules	6
7.1	Brigade	6
7.2	Volunteer Emergency Services Equipment Program	6
8	Application Process	7
9	Application Conditions	7
10	Special Access Grant	7
11	Maintenance	7
12	Future Replacement	8
13	Technical Requirements General	8
14	Project Contacts	8
15	Timelines	9

Introduction

The Minister for Emergency Services Mr James Merlino, MLA recently announced the opening of the 2018/19 Victorian Emergency Services Equipment Program (VESEP). The program provides ongoing funding to assist eligible volunteer emergency services organisations with the acquisition of auxiliary equipment.

1. Aim

The aim of the CFA component of the VESEP program is to assist CFA Brigades and Groups through enhancing; operational safety, improving volunteer amenities, replacement or new auxiliary operational equipment, provision of training aides, specialist appliances, field command vehicles and the acquisition of vehicles to enhance their operational response capacity whilst having access to equipment and vehicles that are built to a standard ensuring the safety of volunteers.

2. Priority

The CFA VESEP Steering Committee has recommended the following categories as priorities for this funding round:

- Improvements to Volunteer amenities (eg: air conditioning, hot water service, carpet, furniture)
- Items that enhance operational safety and well being
- The provision of Brigade training aides (eg computers, white boards, projectors)
- New or replacement auxiliary operational equipment (eg: quick fill pumps, chainsaws, generators)
- Field Command Vehicles to assist fire ground management
- New or replacement specialist appliances
- The replacement of aged fire fighting appliances

Priority will be given to operationally justified items of equipment / vehicles in Brigades where it has been identified that there is a lack of capacity to fund these projects through Brigade or Community resources. To ensure equity, CFA will provide appropriate levels of support to Brigades where the community capacity to provide funding is limited (see 10. Special Access Grants below).

Additions to the firefighting fleet:

Any application to increase the size of the brigade owned fire fighting vehicle fleet will again be afforded a low priority and will require a full operational justification completed by the District Operations Manager (OM) and endorsed by the Assistant Chief Officer (ACO).

3. Business Rules

The Business Rules are:

- Brigades / Groups can apply for only **one** project in 2018/19.
- The Chief Officer will be responsible for the overall management of the program.
- All funding applications must be endorsed and prioritised by the respective District Planning Committee's (DPC) and be consistent with District / Region Infrastructure Plans
- Any additions to the Brigade owned fleet will be subject to the approval of the Chief Officer.
- CFA will maintain approved tankers and specialist appliances to Level 1 maintenance.
- Projects commenced prior to Ministerial approval are not eligible for financial assistance.
- It is the responsibility of Brigade/Group to replace assets acquired under the program.
- All Minor works projects must be registered with the VESEP Minor Works Project Manager prior to submission of the application.

4. Selection Criteria

In addition to the selection criteria referred to in the brochure the following CFA criteria will apply and all applications will be assessed on these criteria:

- **Needs Assessment**
 - Is the vehicle / equipment operationally justified?
 - Is the vehicle / equipment suitable for the risks?
 - Is the primary appliance used on strike teams?

- **Risk Assessment**
 - What is the risk environment?
 - Is the risk environment changing?
 - What is the likelihood of the a significant event (Rare, Unlikely, Moderate, Likely, Almost certain]
 - What are the consequences of a significant event?

- **Ability to Crew and Operate**
 - Can the brigade adequately house the vehicle?
 - Can the brigade crew and operate the vehicle and/or equipment?
 - Does the Brigade have the appropriately trained personnel?

- **Benefit to the Community / Catchment**
 - Will the vehicle / equipment be used in the broader community?
 - Will the asset bring a benefit to the community?
 - Is the likelihood that the asset may be provided in the area by CFA / or other agencies ie Vic SES?
 - Will the improved amenities benefit the broader community?

- **Capacity to Fund**
 - Can the Brigade / Group fund the required vehicle / equipment contribution?
 - Can the Brigade / Group fund future maintenance and replacement of the vehicle / equipment?

- **Core Responsibility Factors**
 - Does the proposed asset use fall within the Brigade / Group core responsibilities?

- **Enhance Operational Readiness**
 - Will the asset assist in the Brigade / Group operational readiness / service delivery?

5. Endorsed Projects

Below is a list of the projects available through the VESEP program, all of these must be operationally justified.

Separate handouts / brochures are also available with vehicle descriptions, indicative costs and detailed specifications. (Refer to Section 14. *Project Contacts* for details on where to obtain further information).

5.1. Tankers & Big Fill's

VESEP 2018/19 will offer the following Appliances.

(Refer to 6.1 for funding formula)

- Light Tanker – Crew Cab
- Ultra-Light Tanker – Toyota Land Cruiser
- Big Fill
- Medium Tanker (note changed funding arrangements for additions to the fleet)

5.2. Specialist Appliances

Brigades / Groups wishing to apply for, and build specialist appliances not listed in the program will be required to have the projects overseen by CFA Fleet Services and built by an approved body builder.

The program will offer the following Specialist Appliances (refer to 6.2 for funding formula):

- Multipurpose Vehicles
- Rehabilitation Vehicles

5.3. Operational Equipment

Some equipment examples are listed below, all will be considered on their respective merits:-

(Refer to 6.2 for funding formula).

- Field Command Vehicles (inc Standard Design Model)
Applications must be supported by a weight vehicle calculation pro forma if not the CFA standard build. GVM upgrades will not be considered for any FCV's.

The Weight vehicle calculation pro forma is available on *Brigades on Line – Brigade / Property & Equipment / Brigade Owned Vehicles / Equipment Information*.

- Remote area lighting
- Staging area equipment
- Thermal imaging camera
- Hose testing trailer
- Hygiene unit trailer
- Storz couplings / fittings
- Audio visual training equipment
- Hose / branches
- Single / dual axle big fill trailer
- Defibrillators

Items not available under the program are:

- Helmet Torches
- Breathing Apparatus
- Radios
- Major Capital Works >\$100K
- PFIT Kits
- Turn Out Systems
- GVM upgrades on FCV's

5.4. Volunteer Amenities Improvements

A priority for this funding round is to assist brigades with grants for small works and equipment that enhance CFA member amenities. The total value of these projects shall be less than \$5k in total (\$3,333 VESEP & \$1,667 Brigade contribution) and should be of a non structural nature, not requiring a building permit.

Examples may include:

- Air Conditioning
- Kitchen Refurbishment / Fridge
- Hot Water Services
- Crockery / Cutlery
- Carpet / Lino
- Stove / Oven
- Furniture
- Table / Chairs

Any work undertaken may need to be inspected by the Asset Project Officer and should be carried out by a qualified trades person/s.

5.5. Brigade Minor Works

Funding will also be provided to assist Brigades to undertake minor works which will also enhance CFA member amenities, safety and wellbeing. The total project value is to be less than \$100k (\$66,667 VESEP & \$33,333 Brigade contribution).

Minor Works projects will require pre-registration, assessment and management by the VESEP Minor Works Project Manager and the Asset Project Officer.

It should be noted that a Town Planning permit will most likely be required (refer definition below). In this case the obtaining of all necessary planning and permit approvals will be coordinated through the VESEP Minor Works Project Manager as part of the project implementation.

Examples may include:-

- Motorization of motor room door/s
- Installation of garage / shed
- Male / Female turn out areas
- Static Generators (CFA specification)
- Extension to station
- Car park sealing
- PPC storage
- BBQ areas

Planning Permit

In general terms, works which propose changes to the shape, size and external appearance of a building, or change site conditions which impact on the local amenity, council infrastructure and streetscape require a Planning Permit.

Example - Works involving building extensions (and alterations), modifications to hardstand areas which increase site water catchment and impact on council drainage systems, works involving tree removal and alterations to landscaping, works to crossovers outside property boundaries require Planning Permits.

Building Permit

A Building Permit is required under the Building Act (Victoria) for all building works unless the works being executed is deemed to be maintenance works – i.e., where the work involves the replacement of an existing item when completed, is substantially the same as the existing conditions. All work is required to be undertaken in accordance with National Code for Construction (NCCA) formerly Building Code of Australia (BCA).

Example - Any kitchen or bathroom upgrades undertaken at CFA sites require a building permit. Any physical alteration to the building structure will require a building permit and drawings from appropriate design consultants. **The value of works has no bearing on whether or not a Building Permit is required for CFA Buildings.**

6. Funding Formula

There are two sources of funding for this program, Brigade/Group and VESEP.

6.1. Tankers & Big Fill's

Crew Cab Light Tanker, Ultra Light Tanker & Big Fill Units

- \$2 VESEP to \$1 Brigade Cab Chassis cost

Body

- Funded by grant contribution

Medium Tanker – Addition to Fleet

- \$2 VESEP to \$1 Brigade total cost of vehicle

Medium Tanker – Replacement Tanker

- \$2 VESEP to \$1 Brigade Cab Chassis cost

Body – Replacement vehicle

- Funded by grant contribution

6.2. Specialist Appliances & Operational Equipment (inc FCV's)

- Specialist Appliances & Equipment are wholly funded by Brigades & VESEP as per the formula below.
- \$2 VESEP to \$1 Brigade – to a maximum VESEP contribution of \$150,000
- For replacement FCV's previously funded through the program the \$2: \$1 funding formula will now only be applied to the net change over value (ie cost less trade in value).

6.3 Volunteer Amenities Improvements

- \$2 VESEP to \$1 Brigade – to a maximum VESEP contribution of \$3,333

6.4 Brigade Minor Works

- \$2 VESEP to \$1 Brigade – to a maximum VESEP contribution of \$66,667

7. Funding Contribution Rules

7.1. Brigade

- Brigades / Groups must demonstrate the capacity to fund their portion of the project costs which may include
- Extended Credit applied for in accordance with CFA Finance Corporate Policy FI.05
- Special Access Grant Provisions – refer to Point 10 for guidelines.

7.2. Volunteer Emergency Services Equipment Program

- In most cases VESEP funds will not be released until completion of the project
- Projects commenced on or before Ministerial approval will not be eligible for VESEP funding

8. Application Process

Step 1. Brigade's / Group's to complete application forms in conjunction with District staff and forward to the Operations Managers for operational justification, and to ensure that the application is in accordance with the District Infrastructure Plan.

In the case of Amenities and Minor Works applications, the Asset Project Officer and the VESEP Minor Works Manager will be required to provide an assessment of the application to verify the scope of the proposed works, cost estimates and the deliverability of the project as a prerequisite to consideration of the application.

Step 2. Application forms to be reviewed at District Planning Committee (DPC), or DPC Sub-Committee, and priorities allocated to all applications.

Step 3. The Assistant Chief Officer reviews and provides comment on the DPC recommendations. All endorsed applications, along with supporting information, are forwarded to the VESEP Project Coordinator

Step 4. VESEP CFA Statewide Steering Committee meets to determine State wide priorities and seeks Chief Officer's endorsement. The VESEP Statewide Steering Committee consists of VFBV, Operational and Regional representatives.

Step 5. CFA recommendations forwarded to the VESEP Emergency Management Victoria Committee, who will consider submissions from all participating agencies prior to seeking Ministerial approval.

Step 6. Minister announces approved projects

9. Application Conditions

- **Brigades / Groups may apply for only one project in 2018/19**
- Approval for funding for a replacement tanker or specialist appliance is conditional on providing proof of disposal of an existing Brigade owned, or community owned tanker
- Tankers less than 20 years of age will not be considered for replacement unless in poor mechanical condition
- FCV Vehicles under five (5) years of age will not be considered for replacement under the program
- Projects which commence prior to the Ministers approval, will not receive any financial assistance from VESEP
- Offers of funding must be accepted within 60 days of receipt of offer or the offer may be withdrawn
- Incomplete applications will be returned to the District and not considered for VESEP 2018/19 funding
- CFA will coordinate the VESEP applications from CFA Brigades
- Brigades / Groups will be required to enter into an agreement to cover the proposed funding arrangements

10. Special Access Grant

Provisions are available for all VESEP projects that are operationally justified. The Brigade / Group should indicate a voluntary contribution amount, if any, with their application. All special access grant applications require an accompanying endorsement from the Assistant Chief Officer justifying the application. Brigades wishing to access this facility are to contact their Operations Manager to discuss progression of an application.

11. Maintenance

- Successful applications for the tankers listed under the Tankers in 5.1 will attract DMO maintenance support to level 1
- CFA will maintain other specialist appliances, approved by the Chief Officer, on level 1 maintenance

- All other appliances will receive a Brigade owned maintenance allowance as approved by the District

12. Future Replacement

As part of the conditions relating to the offer of funding, Brigades / Groups are required to accept responsibility for the future replacement of the vehicle or item of equipment. Whilst CFA does not undertake to replace the vehicle or equipment when it reaches the end of its life, consideration for replacement may be given on a merit basis.

Each Brigade / Group is to prepare a financial plan for funding the replacement of the vehicle or equipment when it reaches the end of its operational life – as deemed by CFA Policy.

13. Technical Requirements – General

Any Cab chassis, which can be new or used, must comply with current CFA specifications. Funding will not be approved to assist Brigades / Groups acquire a cab chassis that does not meet CFA current specifications.

Any new cab chassis purchased by Brigades / Groups must be modified to meet CFA standards at Brigade expense.

Second hand cab chassis under 5 years old will only be accepted after a DMO inspection to the satisfaction of the Operations Manager. The inspection will include roadworthiness and robustness relevant to the proposed use and lifespan as a firefighting vehicle.

14. Project Contacts

Further information and assistance can be obtained through the following channels:-

Ask your **Operations Manager** or **Operations Officer**

Or

CFA's Brigades Online contains all documentation including vehicle descriptions, indicative costs and specifications. This information can be found by going to: Brigades Online home > Brigade > Property & Equipment > Brigade Owned Vehicles > Current VESEP Details

CFA's Intranet: This information can be found by going to Intranet home > Operations > Firefighting vehicles > Brigade Owned Vehicles > Current VESEP Details

Or

VFBV Website: Application assistance can be obtained via VFBV Field Officers
www.vfbv.com.au/vesep.php

Diane Frost
VESEP Project Coordinator
P O Box 701
Burwood East Vic 3149
☎: 9262 8630
Email: d.frost@cfa.vic.gov.au

Bruce Rowley
VESEP Minor Works Project Manager
P O Box 701
Burwood East Vic 3149
☎: 03 5833 2425
Email: b.rowley@cfa.vic.gov.au

15. Timelines - Anticipated dates and maybe subject to change

Dates	Process
27th April 2018	Application's Open
4 th June 2018	Applications Close - <i>Completed application forms along with relevant documentation should be forwarded to your Operations Manager for processing</i>
5 th June – 10th June	District Planning Committee (DPC) or designated sub committee prioritises applications. Assistant Chief Officer to review and provide comment on the recommendations
13 th June 2018	All applications forwarded to CFA VESEP Project Coordinator
13 th August 2018	<p>CFA VESEP Steering Committee meets to determine State wide priorities.</p> <p>Steering Committee Representatives:- Adam Barnett – VFBV Hans Van Hammond – VFBV Bruce Conboy – VFBV Darren Wallace – VFBV Stephanie Rotarangi – Deputy Chief Officer Operational Capability & Growth Peter O'Keefe – Assistant Chief Officer West Les Mengoni – Manager Infrastructure Planning Ross Sullivan – Assistant Chief Officer North East Di Frost – VESEP Project Coordinator</p> <p>Advisors:- Danny Jones – Executive Manager Technical Asset Strategy and Services Craig Brownlie – A/Manager Structural Fire Planning Bruce Rowley – VESEP Minor Works Project Manager</p>
14 th August 2018	Chief Officer meeting to review recommendations and statewide initiatives
30th August 2018	EMV meets with all agencies to review priorities and seek Ministerial approval of projects
Mid September 2018	EMV forwards all agency recommendations for Ministerial approval
Mid September 2018	Anticipated Ministers announcement and advice forwarded to successful Brigades
Mid September 2018	CFA advises all applicants of funding outcomes

- *The Minister will formally advise the successful applicants*